

abbotFox

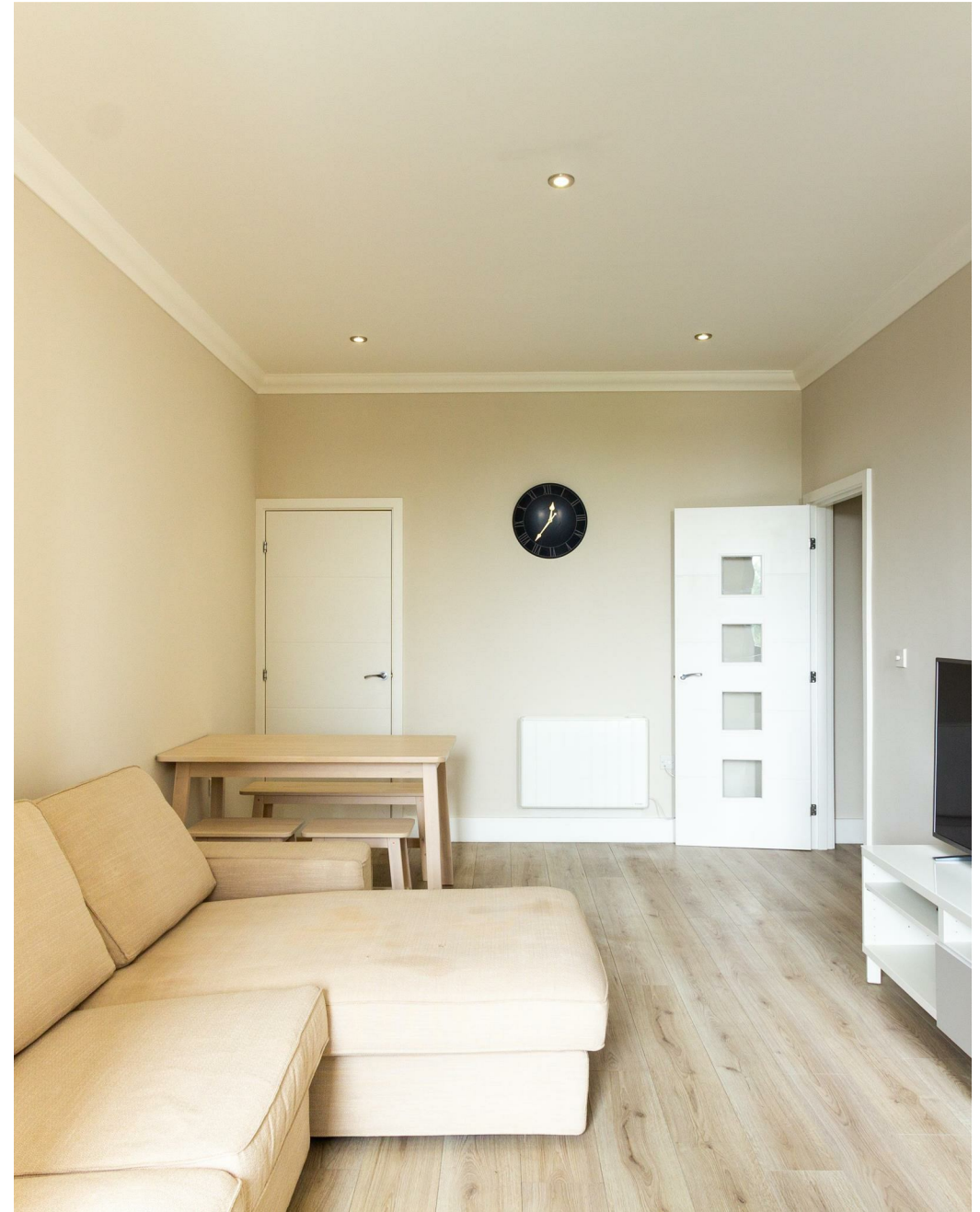


City Centre, NR1
£1,500 PCM

“

We are a team of genuine individuals who hold a deep passion for both property and marketing. Collectively, we bring over 70 years of experience in the property market of Norfolk and Suffolk. Our affection for both counties runs deep, and we are enthusiastic about sharing our passion with you.

Colin McKenzie | **Branch Partner**





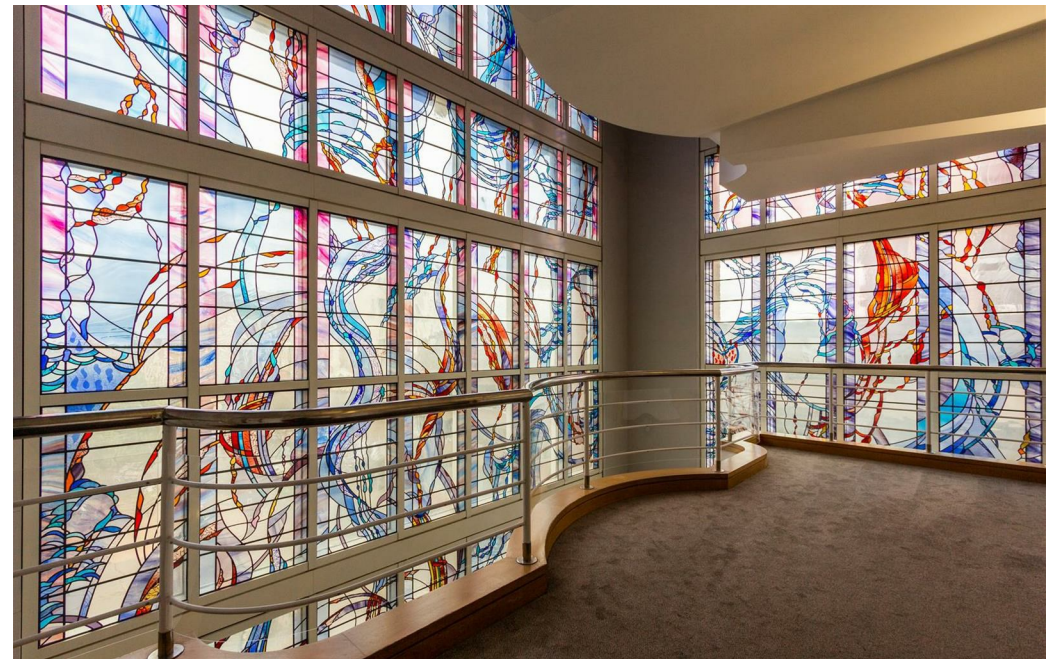


THE DETAIL _____

AbbotFox is delighted to present this exceptional purpose-built apartment located in the heart of the City Centre, NR1. This stylish residence features two generous double bedrooms, making it an ideal choice for professional couples seeking the convenience and vibrancy of city-centre living.

The open plan living accommodation is designed to create a welcoming and spacious atmosphere, perfect for both relaxation and entertaining. The property has been meticulously maintained by the current owners, ensuring that it is in excellent condition for its new occupants.

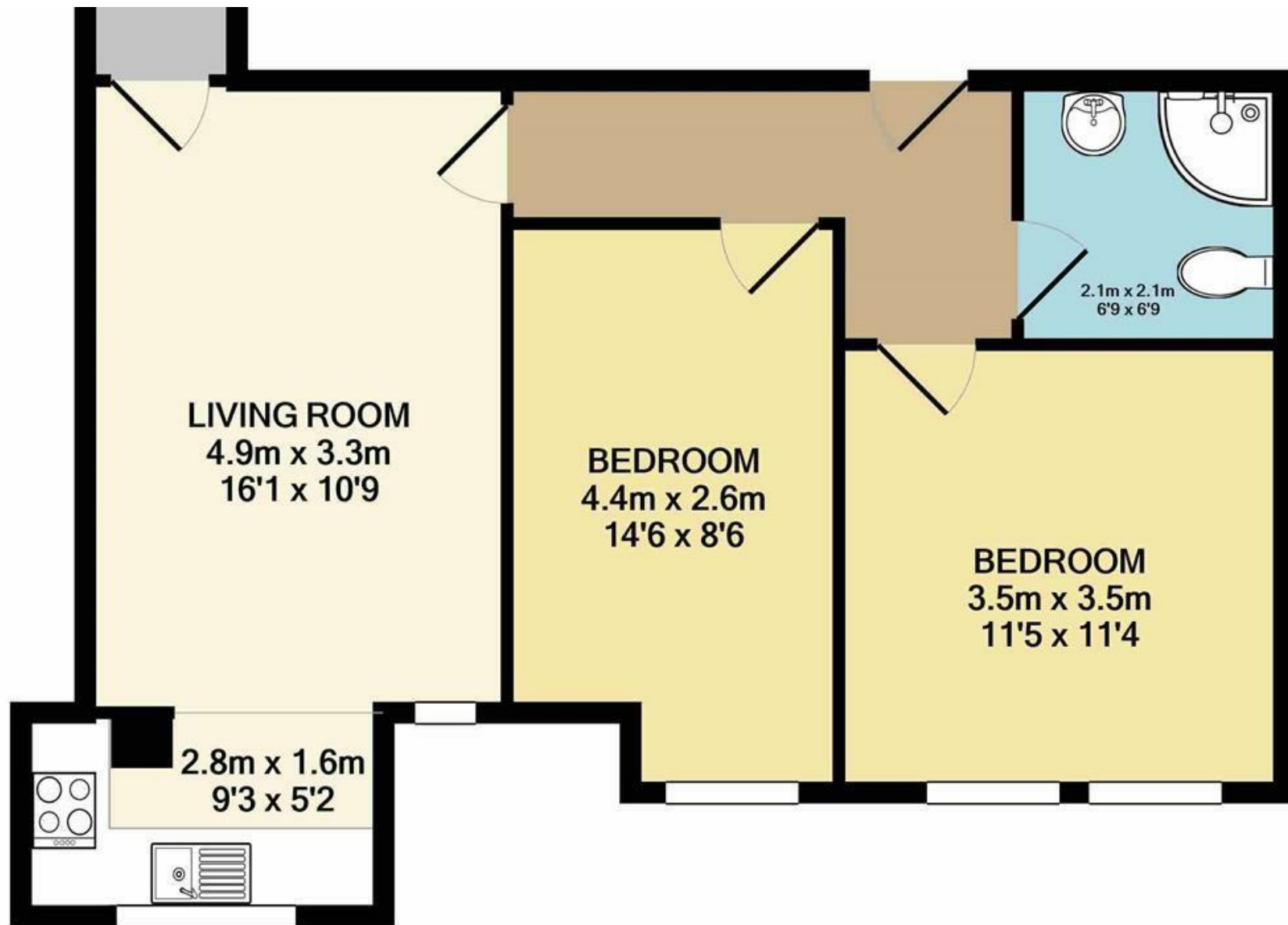
One of the standout features of this apartment is the secure, allocated parking space, a rare find in such a central location. This added convenience allows for easy access to all the amenities and attractions that the city has to offer, while providing peace of mind for vehicle owners.





THE HIGHLIGHTS _____

- Generous apartment
- Two double bedrooms
- Secure, allocated parking
- Light and stylish open plan living accommodation
- Convenient, city centre location
- Viewing advised



TOTAL APPROX. FLOOR AREA 54.6 SQ.M. (588 SQ.FT.)

Let's talk

01603 660000

sales@abbotfox.co.uk

@abbotfox

EPC RATING - E

Disclaimer – In accordance with the Property Misdescriptions Act, the company abbotFox gives notice that all descriptions, references to condition, necessary permissions for use and other details are given in good faith and believed to be correct, but any purchaser should not rely on them as statements of fact, and must satisfy themselves by inspection or other means, as to their accuracy.